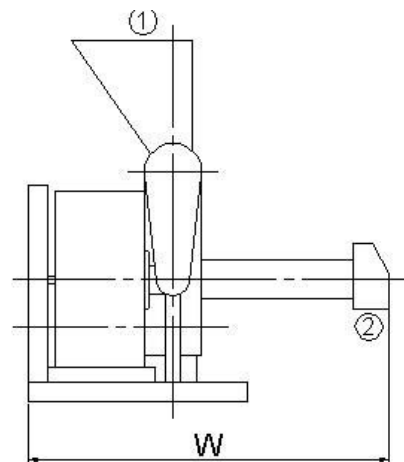
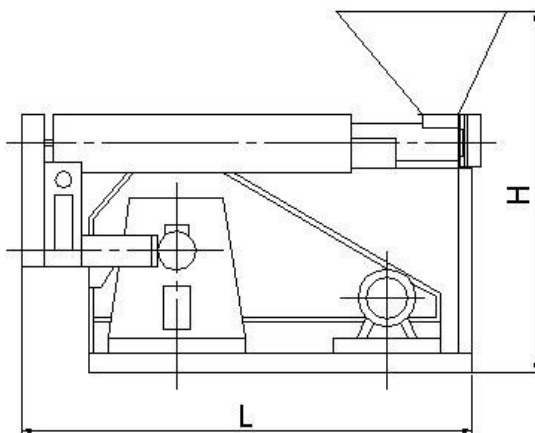




## Corn Extruder SDET

Type	SDET 55	SDET 75	SDET 90
Capacity (t/h)	0.4-0.6	0.8-1.2	1-1.5
Main motor power (kw)	55	75	90
Conditioner motor power (kw)	2.2	2.2	3
Cutter motor power (kw)	1.1	1.1	1.1
Main shaft speed (rpm)	550	550	550
Dimension (mm) LxWxH	2460x2370 x2020	2460x2560 x2020	2460x2750 x2020



① Product inlet

② Product outlet